

Trumpet in B \flat 2

Bullpup Band Cheers

D. McDowell

$\text{♩} = 120$ Go Mighty Bullpups

Musical notation for the first staff of 'Go Mighty Bullpups'. It is in 4/4 time with a tempo of 120. The key signature has two flats (B \flat and E \flat). The melody starts with a quarter rest, followed by a quarter note G \flat , a quarter note B \flat , and a quarter note D. A four-measure rest is indicated by a '4' above the staff. The melody continues with a quarter note G \flat , a quarter note B \flat , and a quarter note D, followed by eighth notes G \flat and B \flat , and quarter notes D and E.

Musical notation for the second staff of 'Go Mighty Bullpups'. It begins with a measure rest labeled '12'. The melody continues with eighth notes G \flat and B \flat , and quarter notes D and E, followed by eighth notes G \flat and B \flat , and quarter notes D and E. The piece concludes with a quarter note G \flat , a quarter note B \flat , and a quarter note D, ending with a double bar line.

Let's Go Bullpups

Musical notation for the first staff of 'Let's Go Bullpups'. It starts with a measure rest labeled '20'. The melody consists of eighth notes G \flat , A \flat , B \flat , and C, followed by a quarter rest. This is followed by eighth notes B \flat , A \flat , G \flat , and F, and a quarter rest. The next measure has eighth notes E \flat , D \flat , C \flat , and B \flat , and a quarter rest. The final measure has eighth notes A \flat , G \flat , F \flat , and E \flat , and a quarter rest.

Musical notation for the first staff of 'Iron Man' and 'Peter Gunn'. It begins with a measure rest labeled '28'. The tempo is 80. The 'Iron Man' section has a two-measure rest labeled '2'. The tempo then changes to 120 for the 'Peter Gunn' section, which has a four-measure rest labeled '4'. The melody for 'Peter Gunn' starts with eighth notes G \flat , A \flat , B \flat , and C, followed by eighth notes B \flat , A \flat , G \flat , and F, and a quarter rest. The piece ends with a quarter note G \flat and a quarter note B \flat .

Musical notation for the first staff of 'Thrift Shop'. It starts with a measure rest labeled '40'. The tempo is 170. The melody consists of eighth notes G \flat , A \flat , B \flat , and C, followed by eighth notes B \flat , A \flat , G \flat , and F, and a quarter rest. This is followed by a measure rest. The 'Thrift Shop' section has an eight-measure rest labeled '8'. The melody continues with eighth notes G \flat , A \flat , B \flat , and C, followed by eighth notes B \flat , A \flat , G \flat , and F, and a quarter rest. The piece ends with a quarter note G \flat and a quarter note B \flat .

Bullpup Band Cheers

55



63

♩ = 120

7 Nation Army

Play 4 Times

Go Fight Win



71

♩ = 170



RIFF - Go Pups, Go!

79



87



Bullpup Band Cheers

2nd Trumpet 3

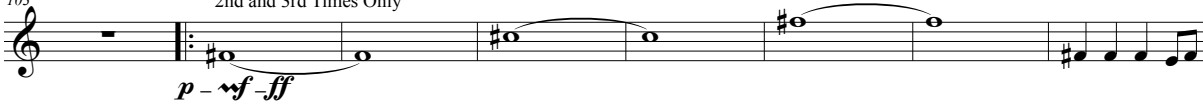
95



Mortal Kombat

2nd and 3rd Times Only

103



111

Huh!

