

# FANFARE AND PROCESSIONAL

(Pomp and Circumstance)

Flute

EDWARD ELGAR  
Arranged by  
James D. Ployhar

Allegro

1 3 *f* 3

Maestoso

10

10

B

*f*

*ff*

1.

Optional ending to

A

Allargando

Fine

D.S. al Fine

# FANFARE AND PROCESSIONAL

(Pomp and Circumstance)

EDWARD ELGAR

1st B $\flat$  Clarinet

arranged by  
JAMES D. PLOYHAR

Allegro

1 3

*f* *mf* *mf* *f*

**(A)** *Maestoso*

**(B)** *mf*

1. 2.

Optional ending to **(A)**

Allargando *Fine* *D.S. al Fine*

# FANFARE AND PROCESSIONAL

## (Pomp and Circumstance)

2nd B $\flat$  Clarinet

EDWARD ELGAR

Arranged by  
James D. Ployhar

Allegro

1 3 *trill* *f* 3

(A) *Maestoso*

(B)

Allargando

Fine

3 *D.S. al Fine*



# FANFARE AND PROCESSIONAL

(Pomp and Circumstance)

Bass Clarinet

EDWARD ELGAR  
arranged by  
JAMES D. PLOYHAR

Allegro

1 3

(A) *Maestoso* *ff* *sempre staccato*

*mp*

(B) *sempre staccato*

*mf*

1.

2.

Allargando *Fine* *D.S. al Fine*

Optional ending to (A)



# (Pomp and Circumstance)

EDWARD ELGAR  
arranged by  
JAMES D. PLOYHAR

2nd E $\flat$  Alto Saxophone

*Allegro*

1 3 3

(A) *Maestoso* *ff*

*mf*

(B) *f* *ff*

1. 3 3

2. *Allargando* *Fine* *D.S. al Fine*

Optional ending to (A)

# FANFARE AND PROCESSIONAL

(Pomp and Circumstance)

Bb Tenor Saxophone

EDWARD ELGAR

Arranged By  
JAMES D. PLOYHAR

Allegro

1 3

*ff*

(A) *Maestoso*

*mf*

(B)

*f*

*ff*

1. ① back to B

2. *Fist* *Optional ending to (A) ② back to A.*

Allargando *Fine* 3 *D.S. al Fine*



# FANFARE AND PROCESSIONAL

(Pomp and Circumstance)

E♭ Baritone Saxophone

EDWARD ELGAR

arranged by

JAMES D. PLOYHAR

Allegro

1 3

*ff*

(A) *Maestoso*

10

10

(B) *sempre staccato*

*mf*

1.

2.

Allargando

*Fine*

Optional ending to (A)

*D.S. al Fine*

# FANFARE AND PROCESSIONAL

(Pomp and Circumstance)

1st Bb Cornet

EDWARD ELGAR

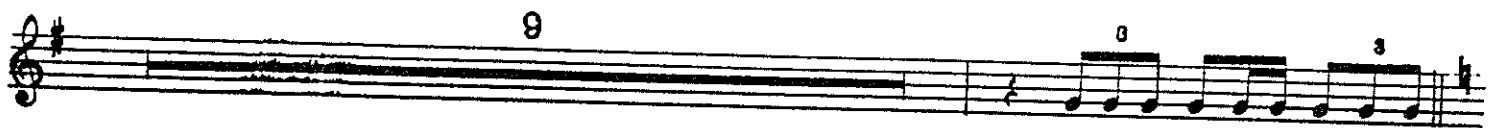
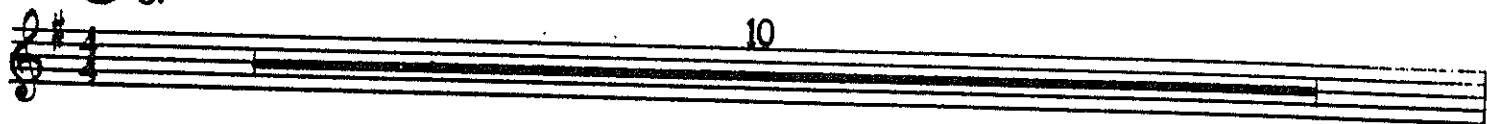
arranged by

JAMES D. PLOYHAR

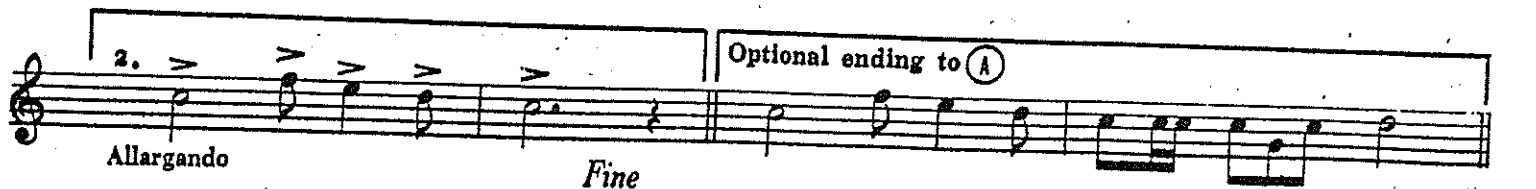
Allegro



(A) *Maestoso*



(B)



3 *D.S. al Fine*

# FANFARE AND PROCESSIONAL

(Pomp and Circumstance)

2nd B $\flat$  Cornet

EDWARD ELGAR

arranged by  
JAMES D. PLOYHAR

Allegro

1  
*ff*

(A) *Maestoso* 10

9  
*f*

(B)

*ff*

*ff*

1. B *f*

2. *f* (A) *f*  
Allargando *Fine* D.S. al Fine



# FANFARE AND PROCESSIONAL

## (Pomp and Circumstance)

1st & 2nd F Horns

EDWARD ELGAR

arranged by  
JAMES D. PLOYHAR

Allegro

1 2 3

(A) *Maestoso* *ff*  
A2

*mf*

(B) *sempre staccato*  
*mf*

1. 2. 3.

Optional ending to (A)

Allargando *Fine* *D.S. at Fine*

# FANFARE AND PROCESSIONAL

## (Pomp and Circumstance)

3rd & 4th F Horns

Q.H.H.S. REBEL BAND  
6040 West Avenue L  
Quartz Hill, Ca. 90271

EDWARD ELGAR  
Arranged by  
James D. Ployhar

Allegro 1

2

ff

A

A2

Maestoso

mf

B

sempre staccato

mf

Optional ending to A

Allargando

Fine

D.S. al Fine

# FANFARE AND PROCESSIONAL

(Pomp and Circumstance)

1st Trombone

EDWARD ELGAR

arranged by

JAMES D. PLOYHAR



FANFARE  
① F 2

Allegro

*ff*

3

CAD

① S. Maestoso

*mp*

*sempre staccato*

②

*mf*

*sempre staccato*

1.

2.

Optional ending to ①

3.

# FANFARE AND PROCESSIONAL

## (Pomp and Circumstance)

2nd Trombone

EDWARD ELGAR

Arranged By  
JAMES D. PLOYHAR

Q.H.H.S. REBEL BAND  
6040 West Avenue L  
Quartz Hill, Ca 90521

Allegro

1 2 (h) *ff* 3

(A)

*Maestoso*

*sempre staccato*

*mp*

(B)

*sempre staccato*

*mf*

1. 3 3

2. 3 (A)

Allargando

Fine

3 D.S. al Fine



# FANFARE AND PROCESSIONAL

(Pomp and Circumstance)

Baritone T.C.

EDWARD ELGAR

arranged by  
JAMES D. PLOYHAR

Allegro

1 3

(A) *Maestoso* *ff*  
*sempre staccato*

*mp*

(B) *f* *ff*

1. 2. *Allargando* *Fine*

Optional ending to (A)

3

- D.S. al Fine

# FANTASIE AND PROCESSIONAL (Pomp and Circumstance)

EDWARD ELGAR

arranged by  
JAMES D. PLOYHAR

Basses

Allegro 1 3

(A) *Maestoso* *ff* *sempre staccato*

(B) *sempre staccato*

1.

2.

Optional ending to (A)

Allargando *Fine* *D.S. al Fine*

# (Pomp and Circumstance)

EDWARD ELGAR  
arranged by  
JAMES D. PLOYHAR

Timpani

Allegro B $\flat$  & F

*fp* *f*

(A)  $\text{♩}$  Maestoso 10

8 *mp*

(B) *mf*

Optional ending to (A)

2. *Allargando* *Fine* *D.S. al Fine*