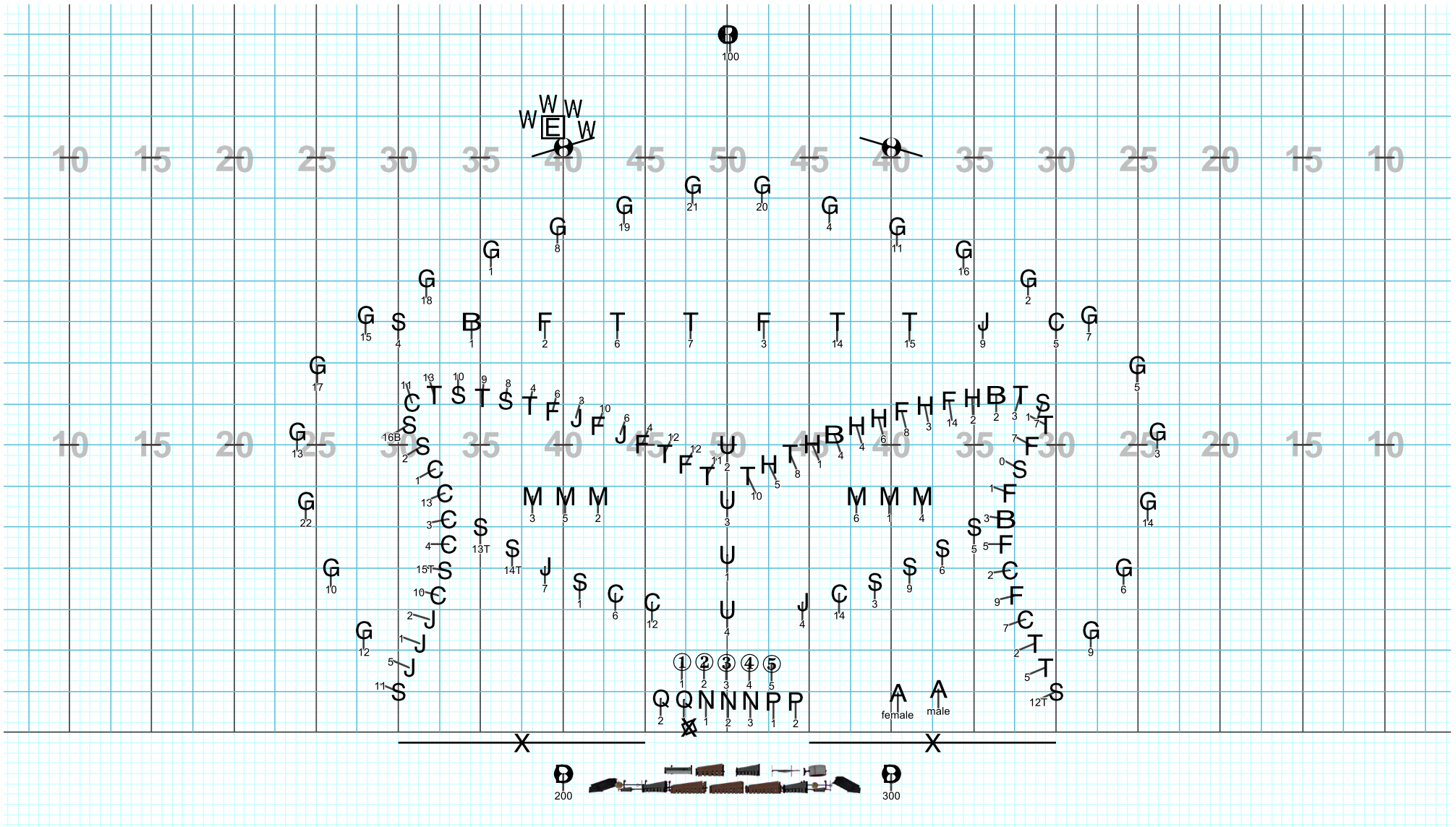


HartCo Mvt 2 2017

Licensed to: Pickens County High School Band
Created on Pyware 3D.
Printed: Mon, Jul 24, 2017 at 4:39 PM



Director Viewpoint

Set #1 Counts: 0

General

Brass

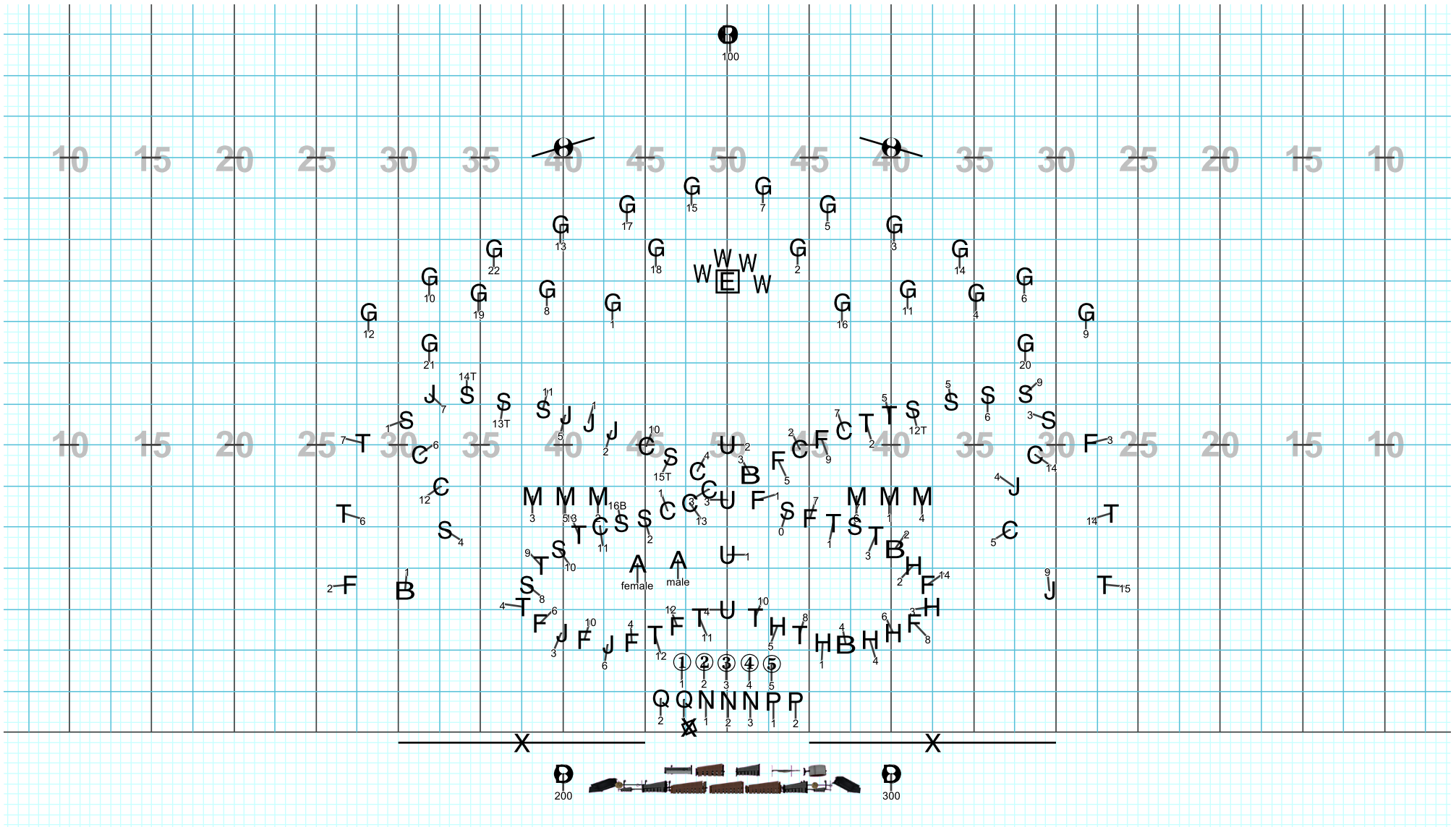
WW

Battery

Guard

HartCo Mvt 2 2017

Licensed to: Pickens County High School Band
Created on Pyware 3D.
Printed: Mon, Jul 24, 2017 at 4:39 PM

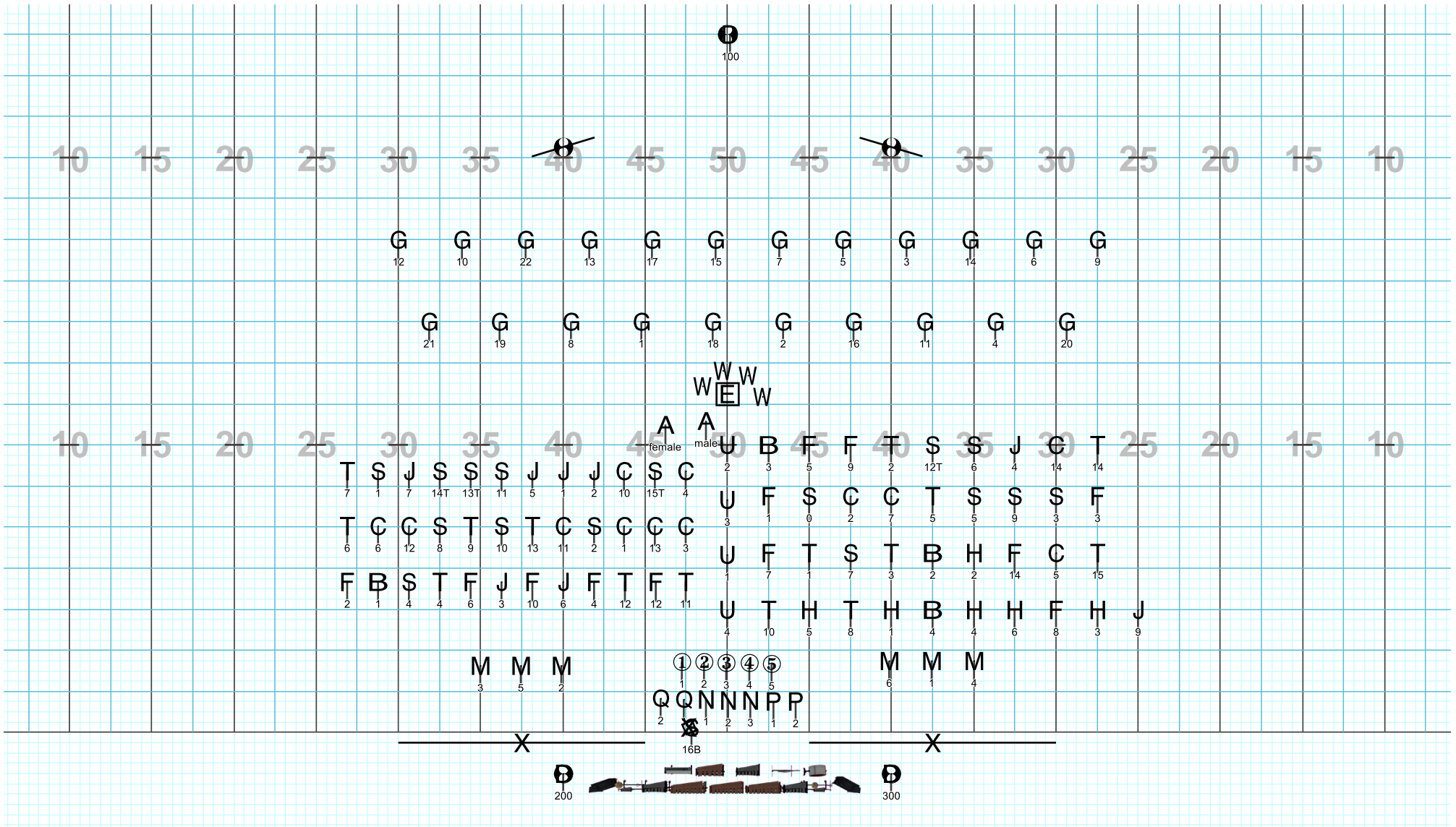


Set #3 Measures: m10 Counts: 6

Hold and Body visual

HartCo Mvt 2 2017

Licensed to: Pickens County High School Band
Created on Pyware 3D.
Printed: Mon, Jul 24, 2017 at 4:39 PM



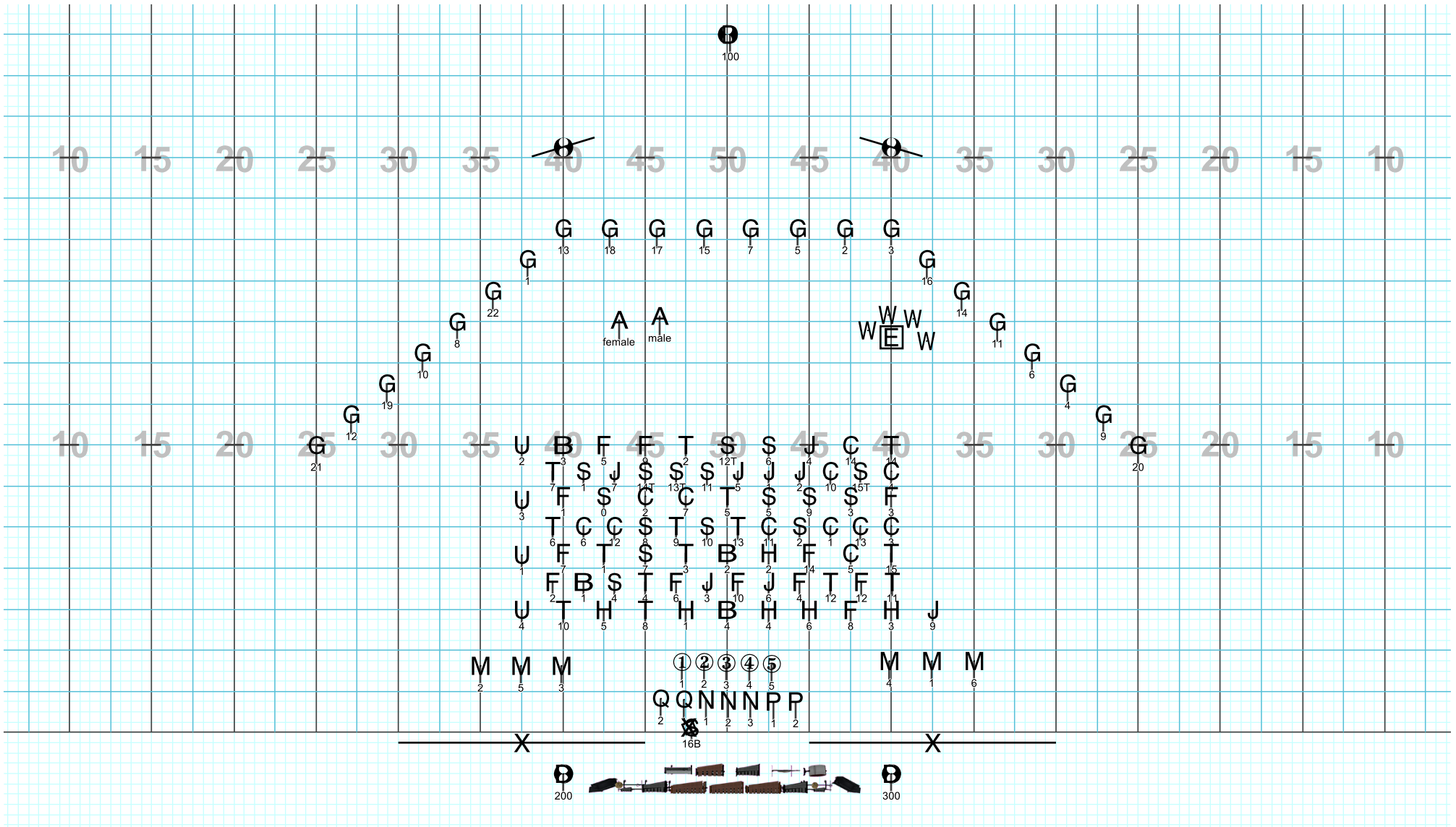
Set #4 Measures: m11-14 Counts: 16

Float to lines

Director Viewpoint

HartCo Mvt 2 2017

Licensed to: Pickens County High School Band
Created on Pyware 3D.
Printed: Mon, Jul 24, 2017 at 4:39 PM



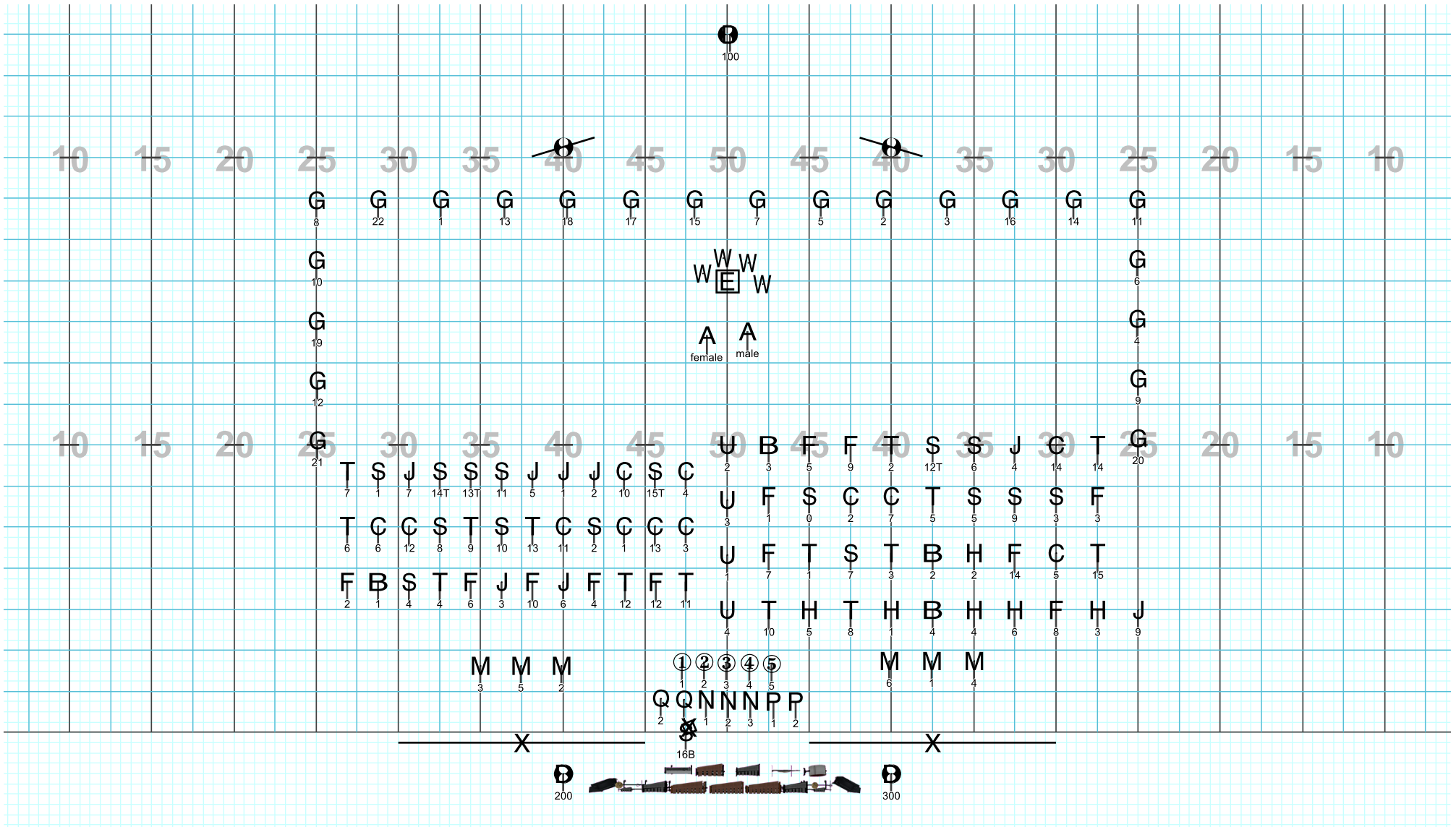
Set #4A Measures: A15-18 Counts: 20

Pass thru lines

Director Viewpoint

HartCo Mvt 2 2017

Licensed to: Pickens County High School Band
 Created on Pyware 3D.
 Printed: Mon, Jul 24, 2017 at 4:39 PM

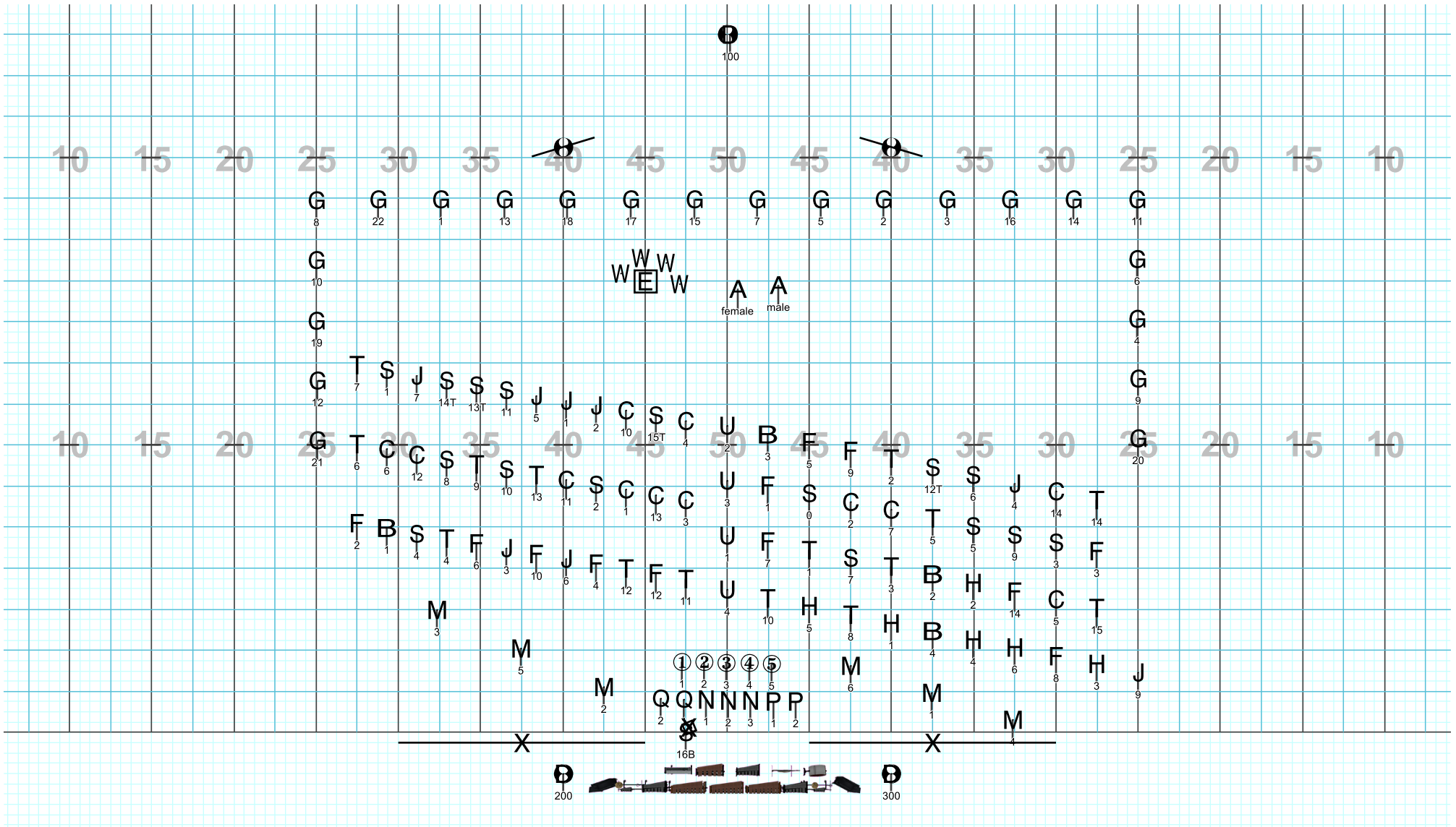


Set #5 Measures: 19-22 Counts: 20

Pull out lines. Crab step with one group if desired

Director Viewpoint

HartCo Mvt 2 2017

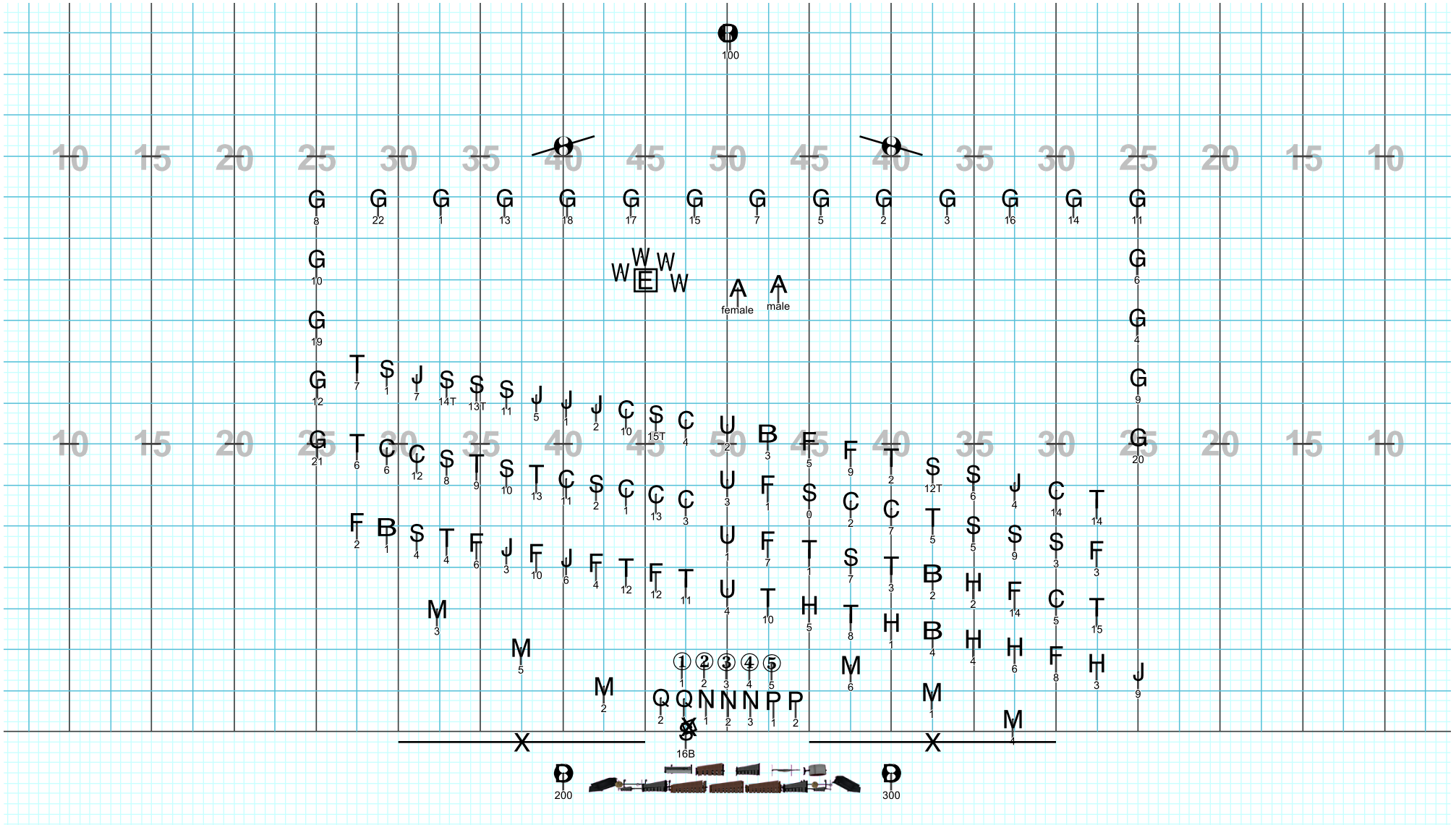


Set #6 Measures: 23-24 Counts: 10

Slant lines

Director Viewpoint

HartCo Mvt 2 2017

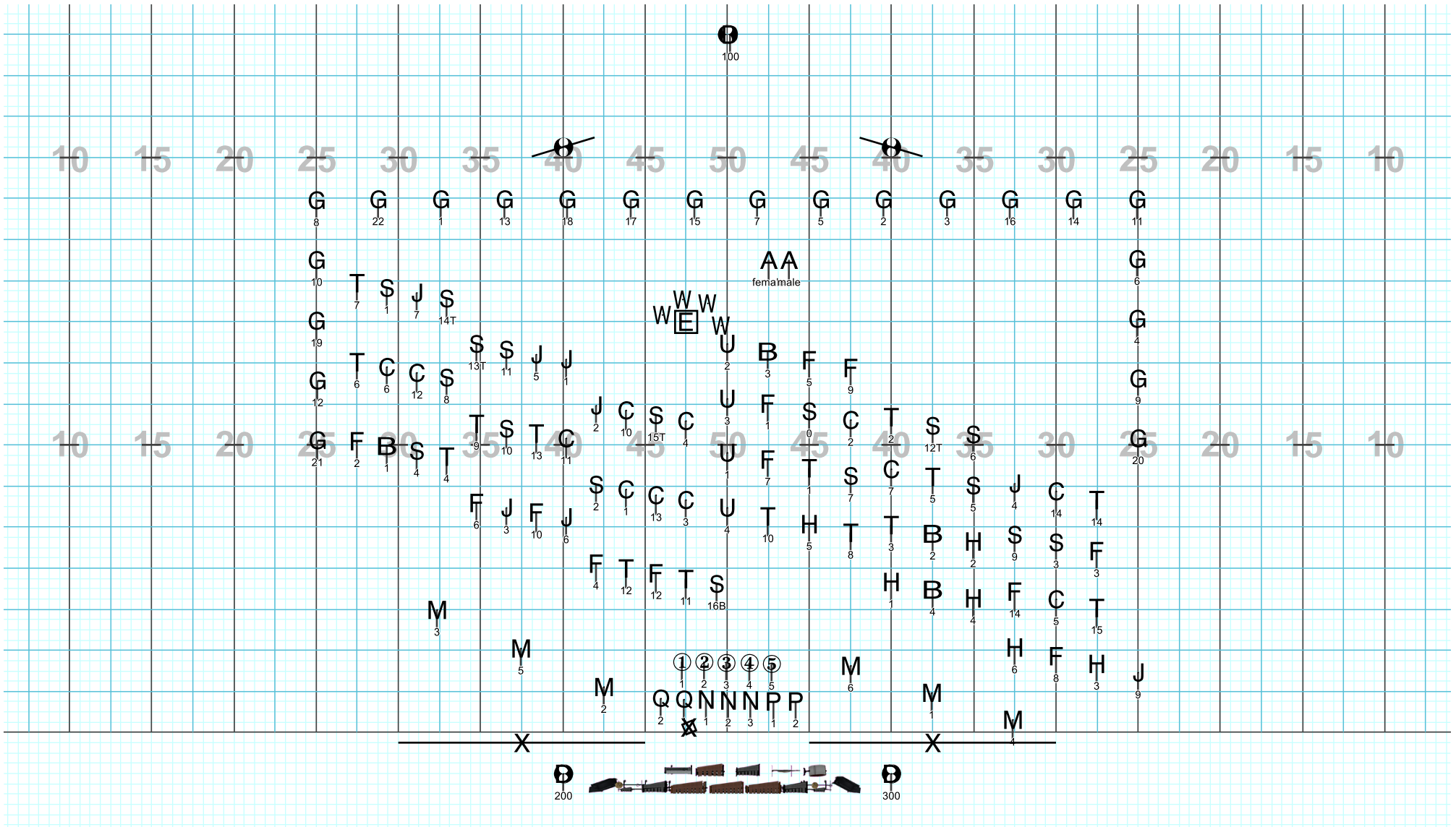


Set #7 Measures: 25 Counts: 4

Hold with horn flash

Director Viewpoint

HartCo Mvt 2 2017



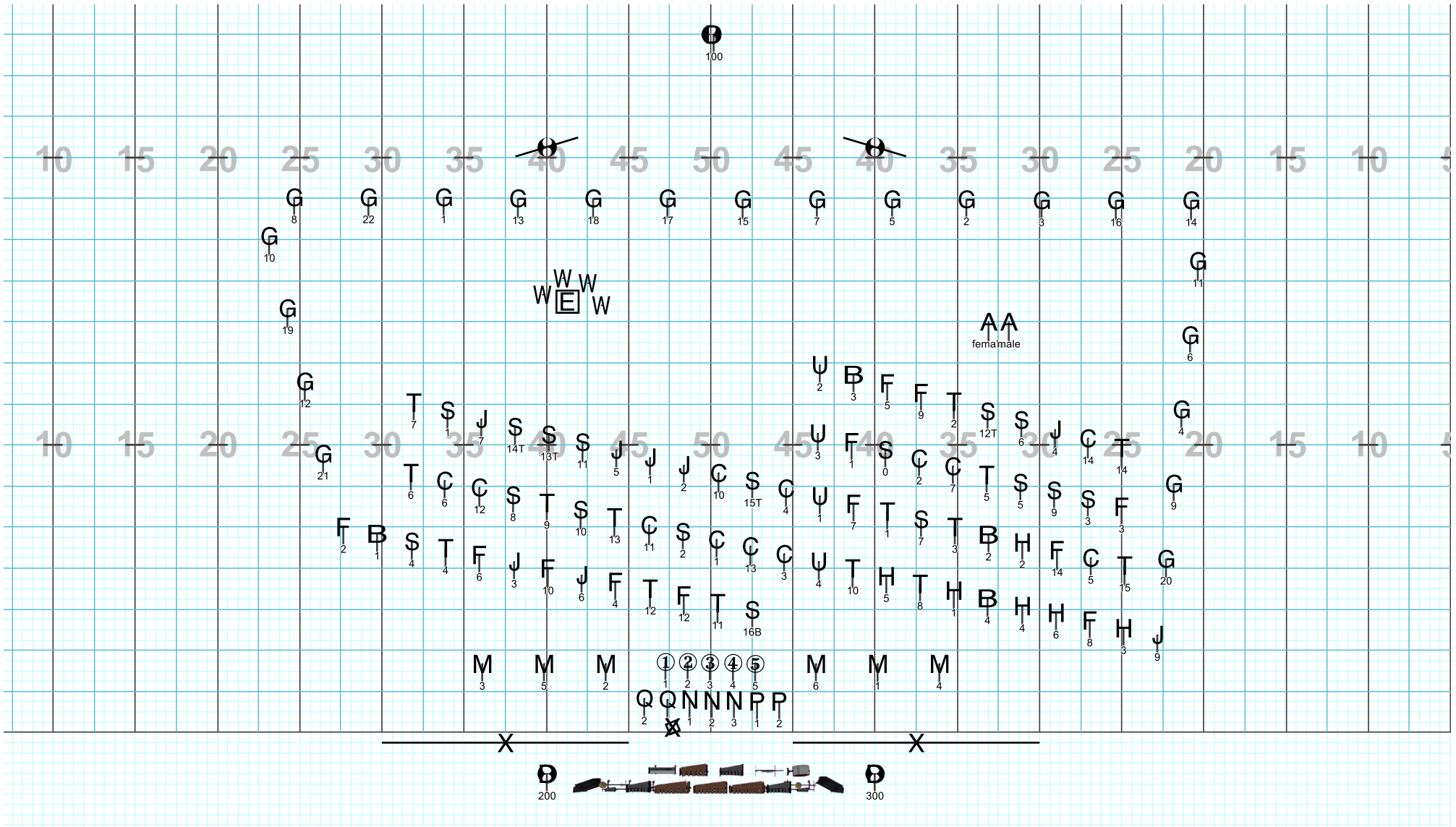
Set #8 Measures: B 26-31 Counts: 24

Step 4box drill. 12 back and 12
 return

Director Viewpoint

HartCo Mvt 2 2017

Licensed to: Pickens County High School Band
 Created on Pyware 3D.
 Printed: Mon, Jul 24, 2017 at 4:39 PM



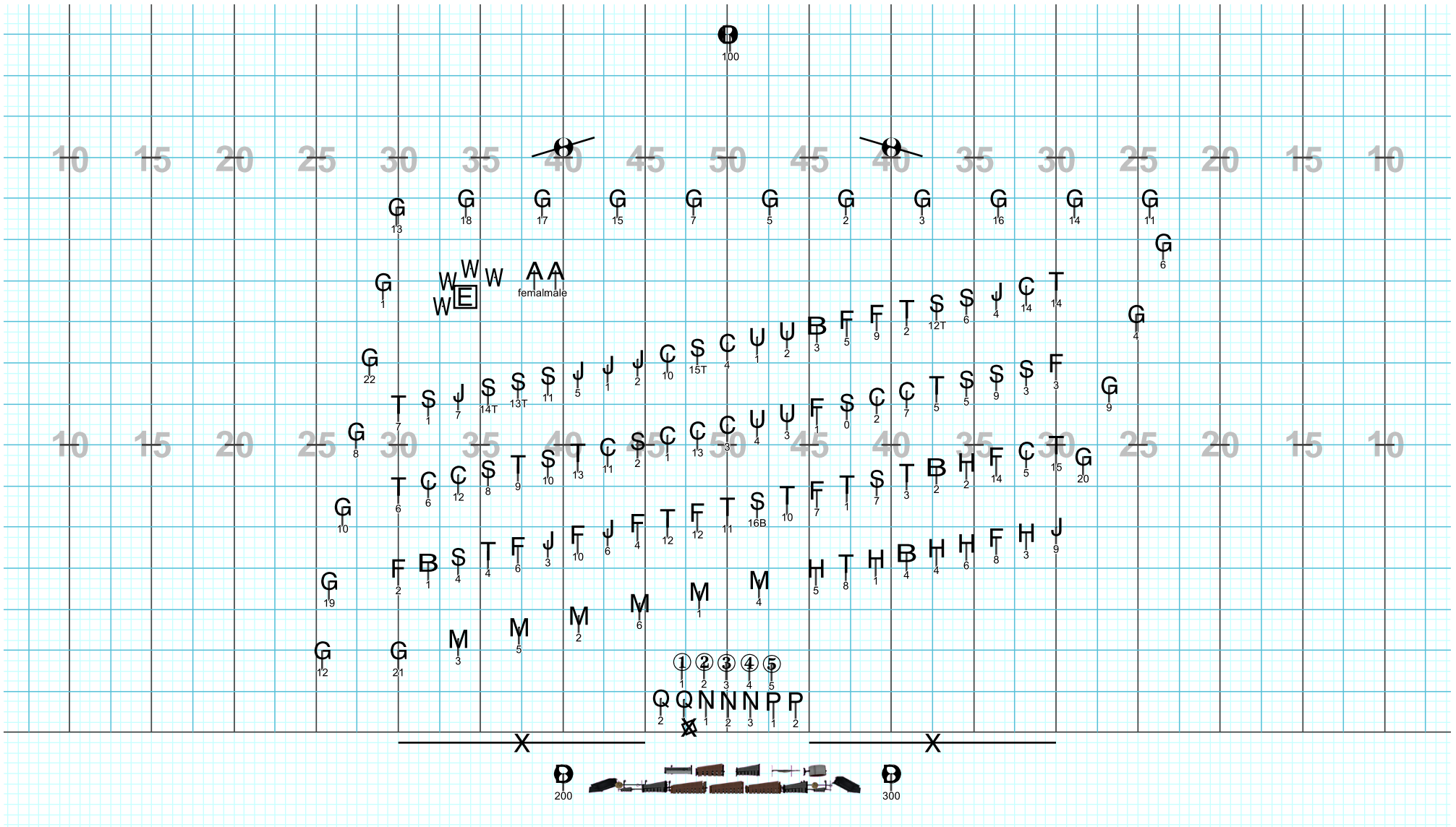
Set #9 Measures: 32-34 Counts: 12

float boxes to lines

Director Viewpoint

HartCo Mvt 2 2017

Licensed to: Pickens County High School Band
Created on Pyware 3D.
Printed: Mon, Jul 24, 2017 at 4:39 PM

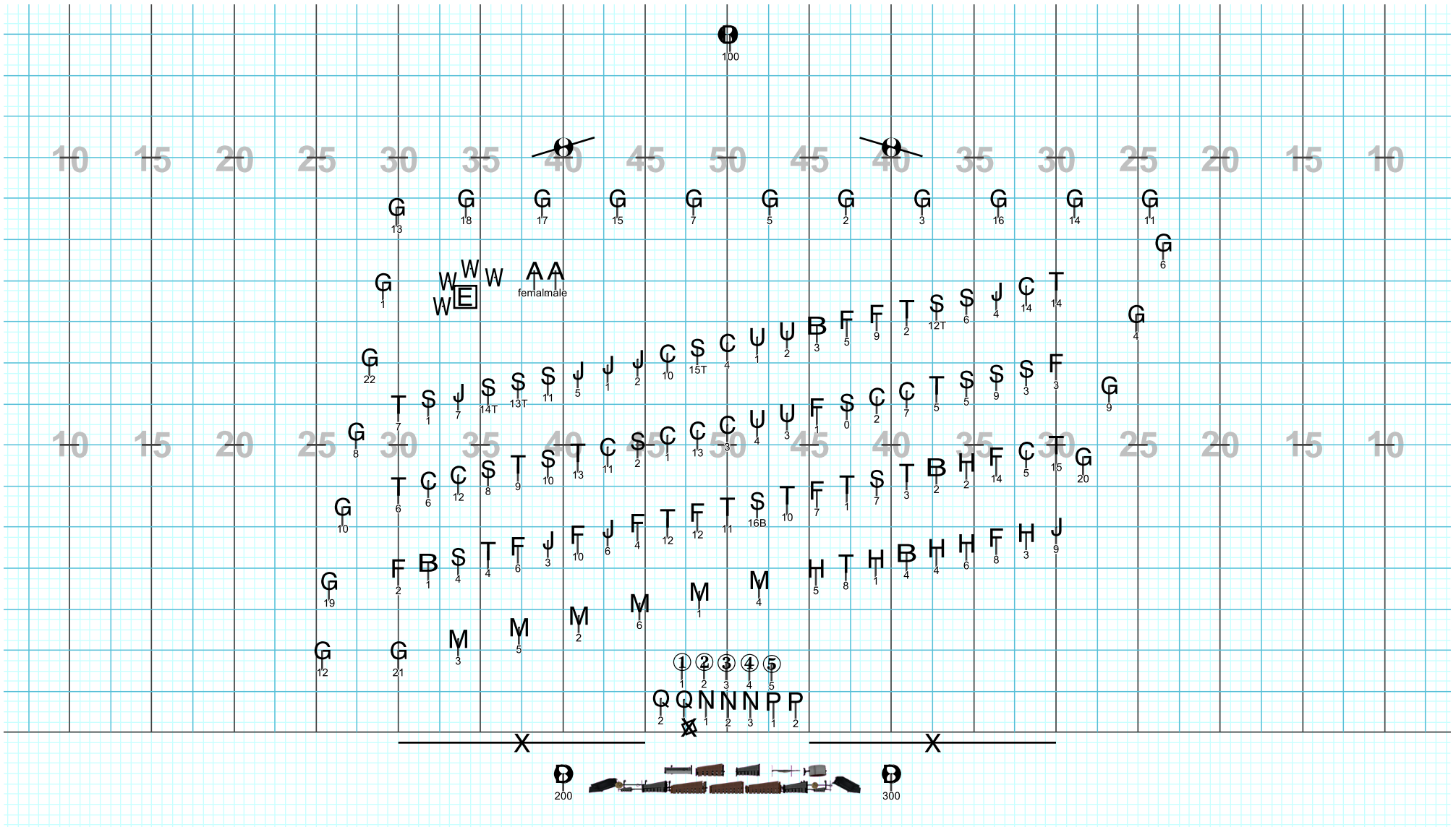


Set #11 Measures: 38-40 Counts: 12

Slant lines opposite way from previous

HartCo Mvt 2 2017

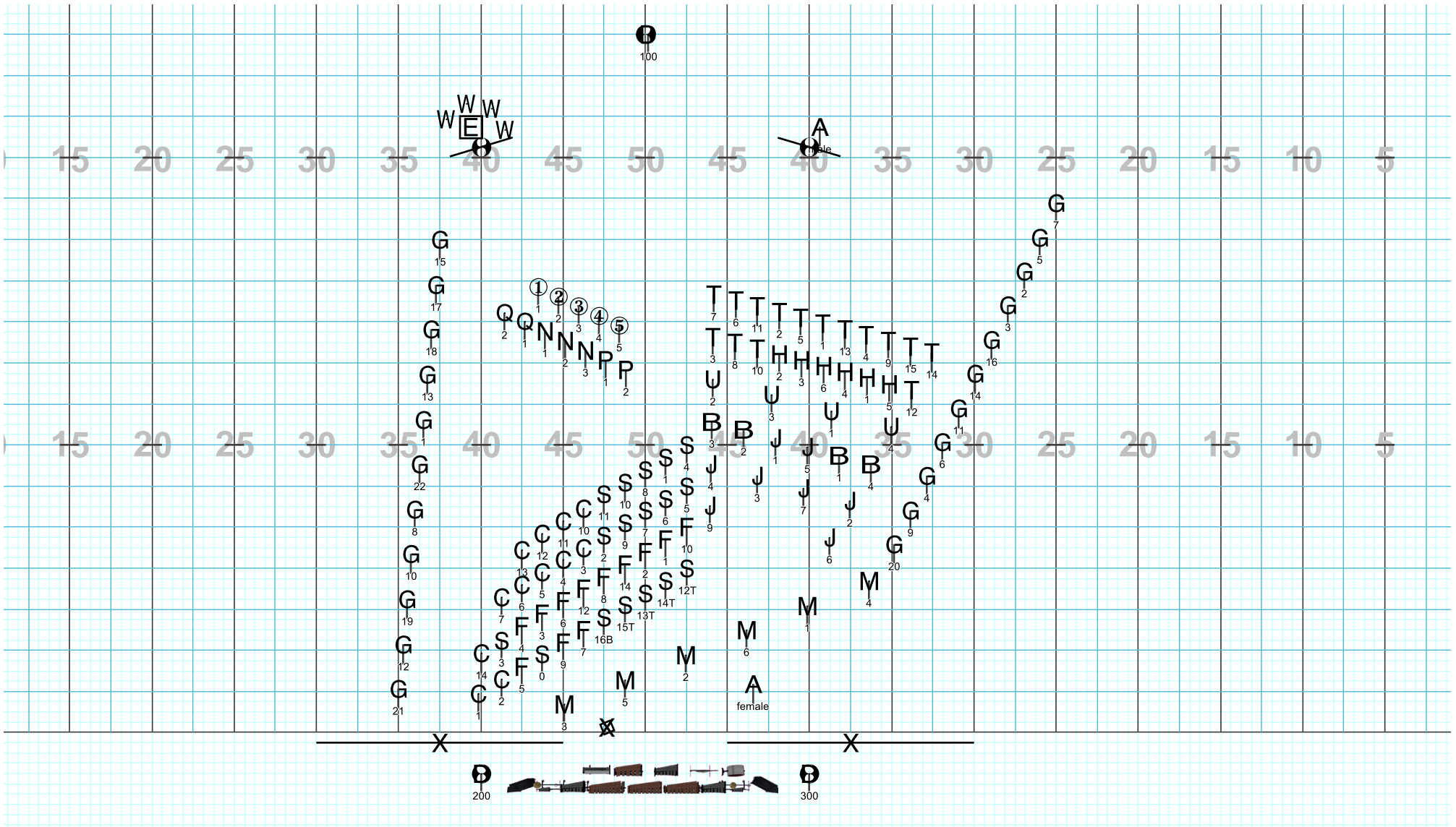
Licensed to: Pickens County High School Band
Created on Pyware 3D.
Printed: Mon, Jul 24, 2017 at 4:39 PM



Set #12 Measures: 41-44 Counts: 16

Layered body visual (by line)

Director Viewpoint

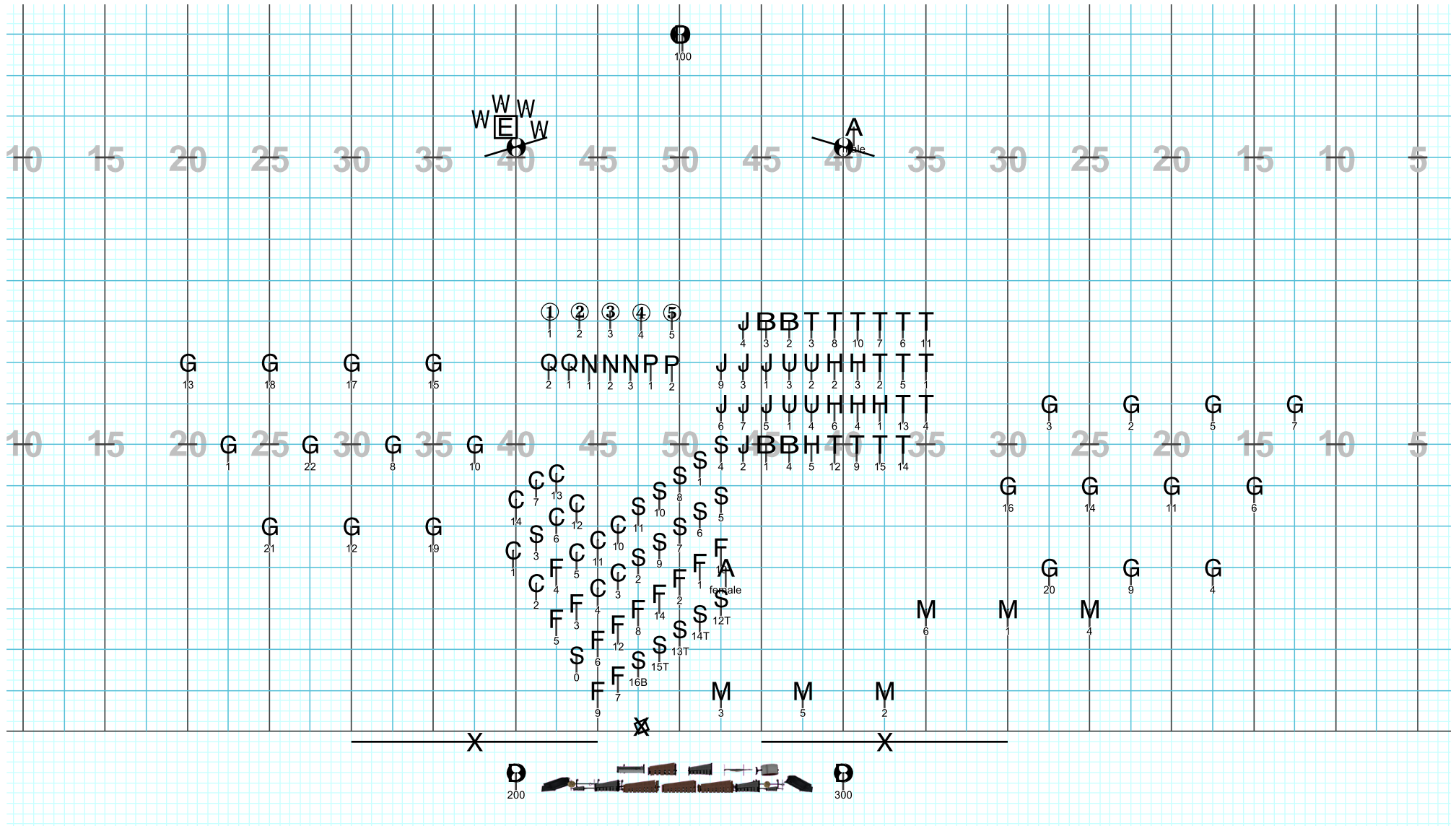


Director Viewpoint

Set #14 Measures: 51-58 Counts: 32

Begin split for Low Brass and WW
feature and Brass Feature

HartCo Mvt 2 2017



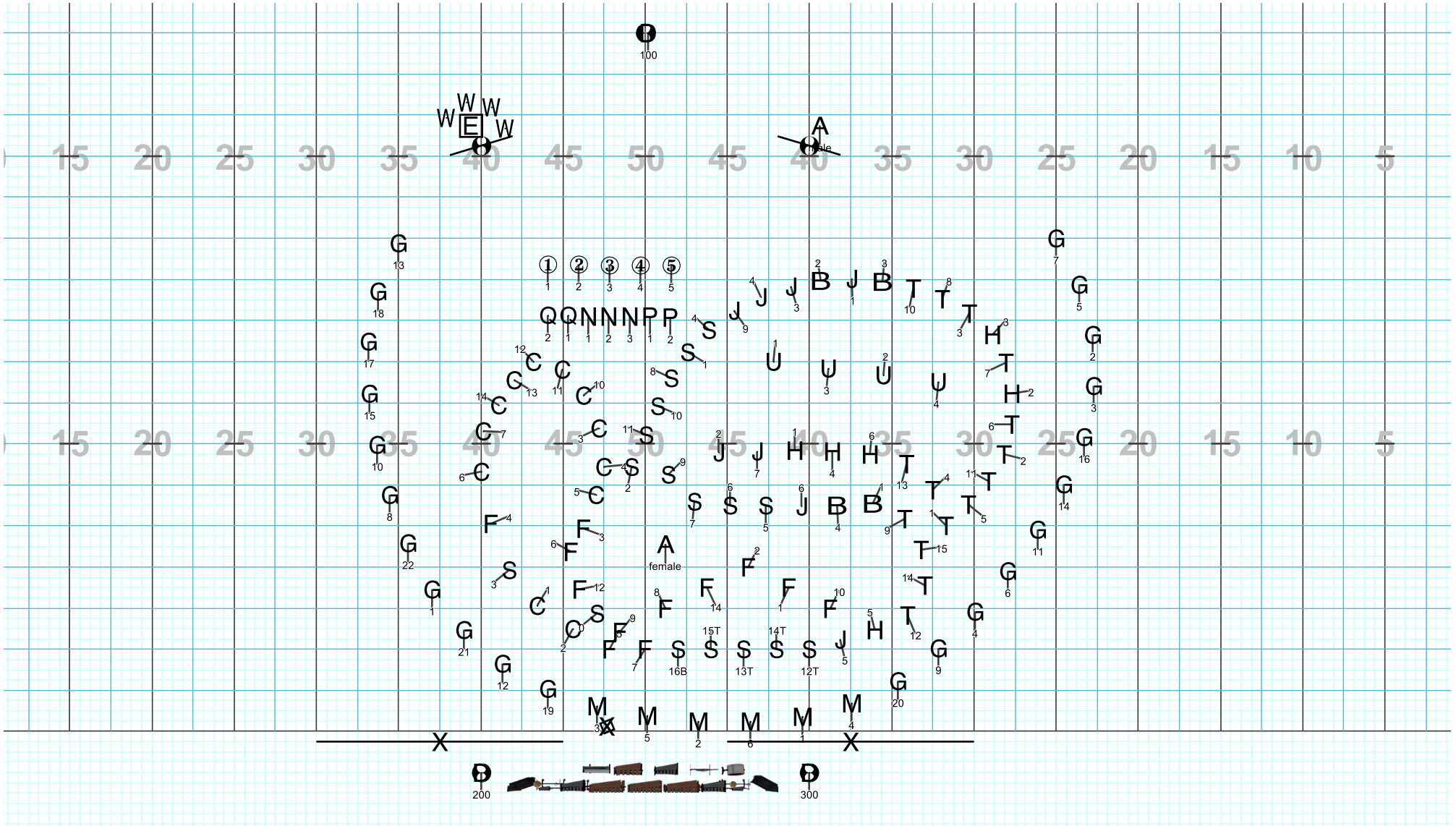
Set #16 Measures: 63-66 Counts: 16

Good spy continues

Brass feature

WW step-2 drill for far side A then expand

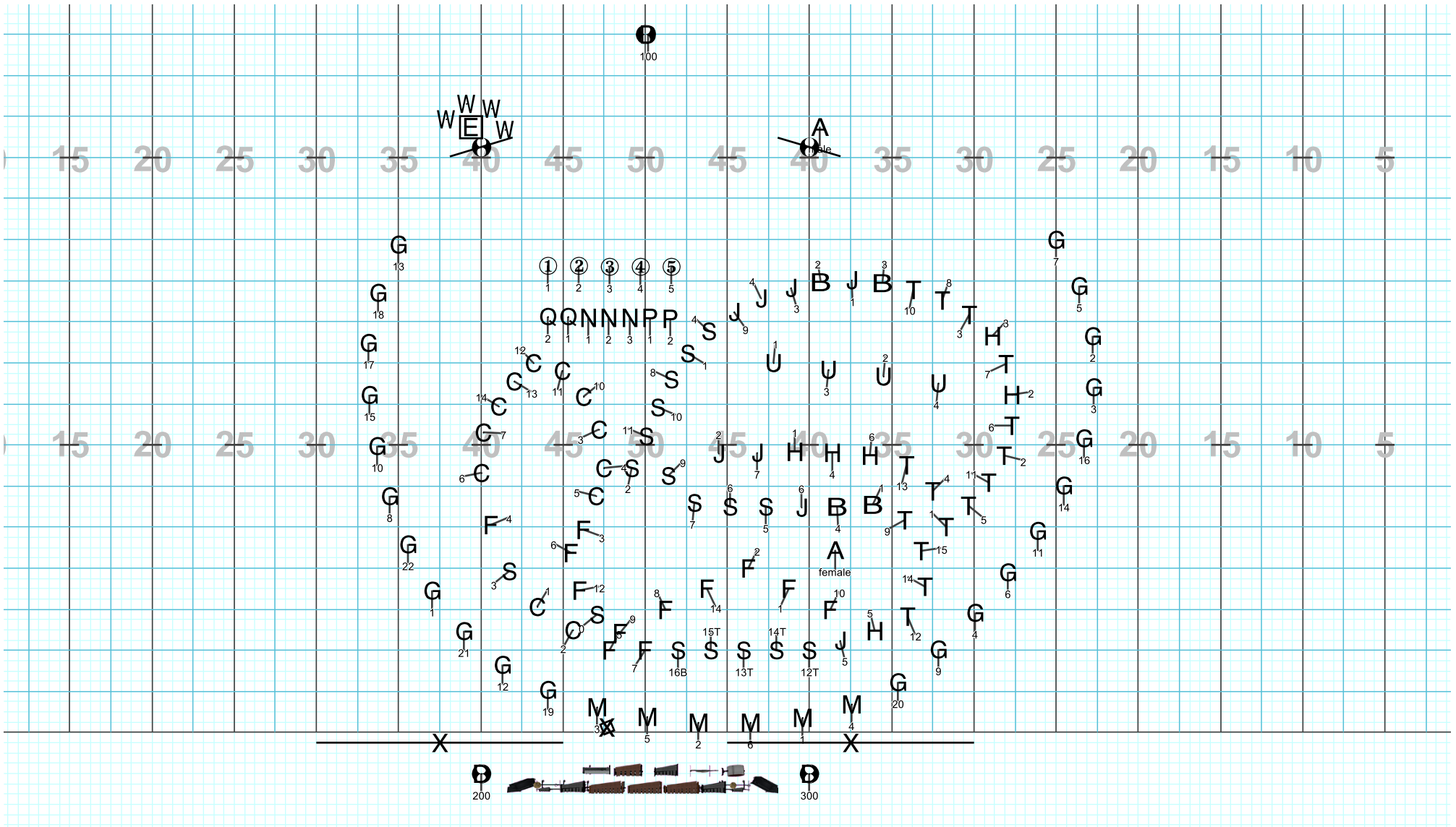
HartCo Mvt 2 2017



Director Viewpoint

Set #17 Measures: 67-70 Counts: 16

Morph and expand all to curvilinear form



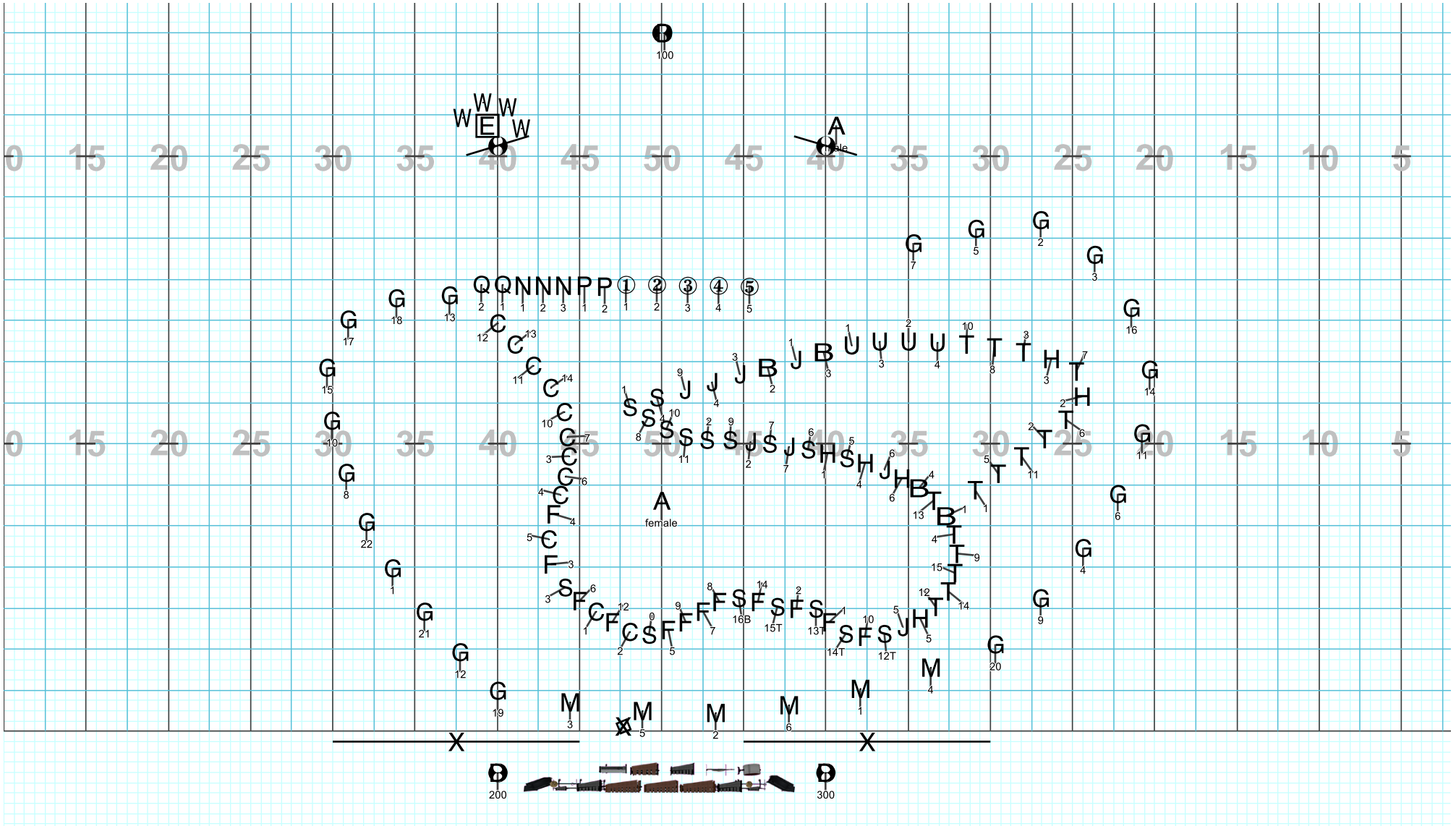
Set #18 Measures: 71-72 Counts: 8

"All hold (quick body vis is possible here, but not required)"

Director Viewpoint

HartCo Mvt 2 2017

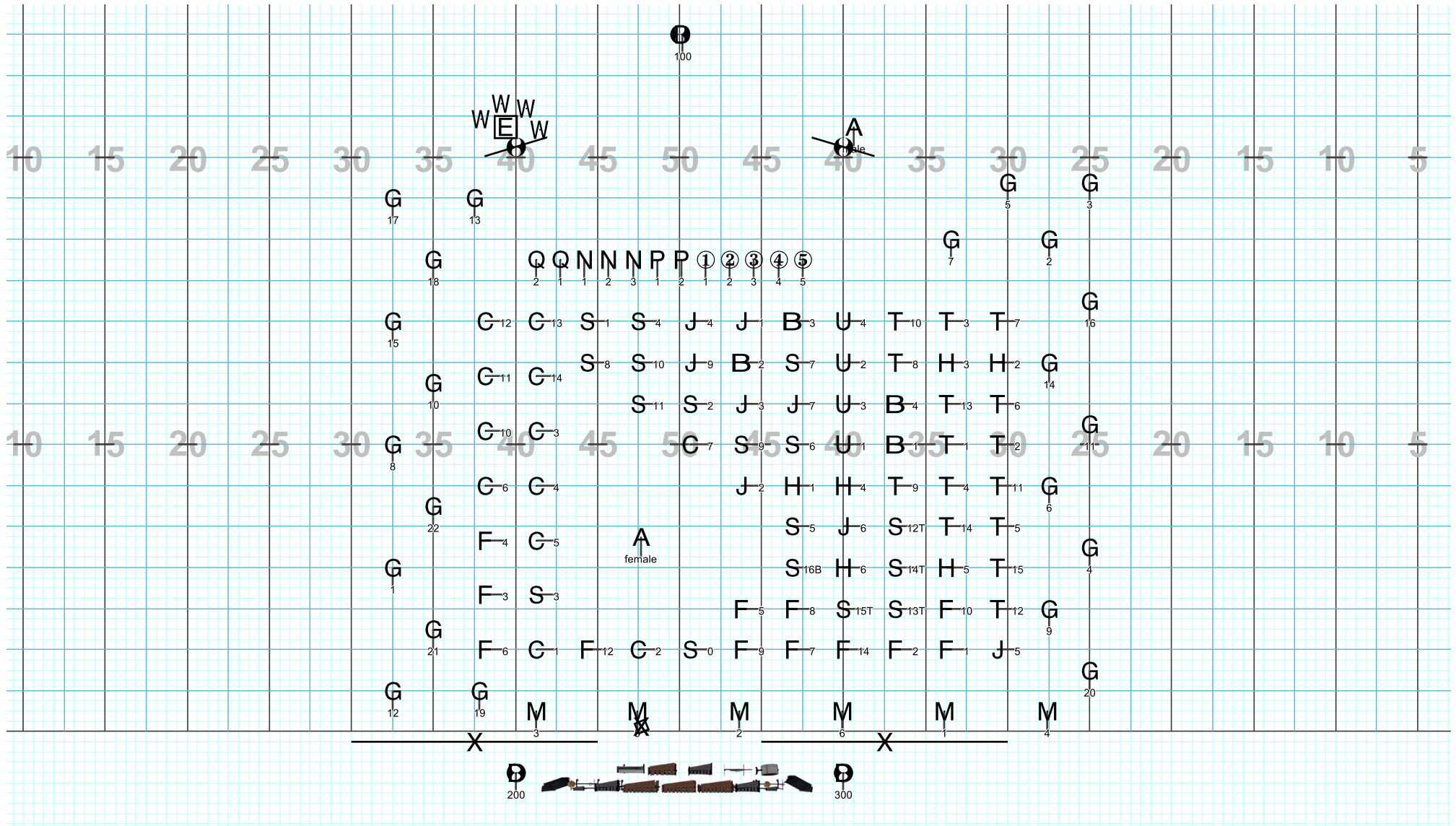
Licensed to: Pickens County High School Band
Created on Pyware 3D.
Printed: Mon, Jul 24, 2017 at 4:39 PM



Set #19 Measures: E 73-74 Counts: 10

"Good spy is trapped by band motion, continues running around to find exit point "

HartCo Mvt 2 2017

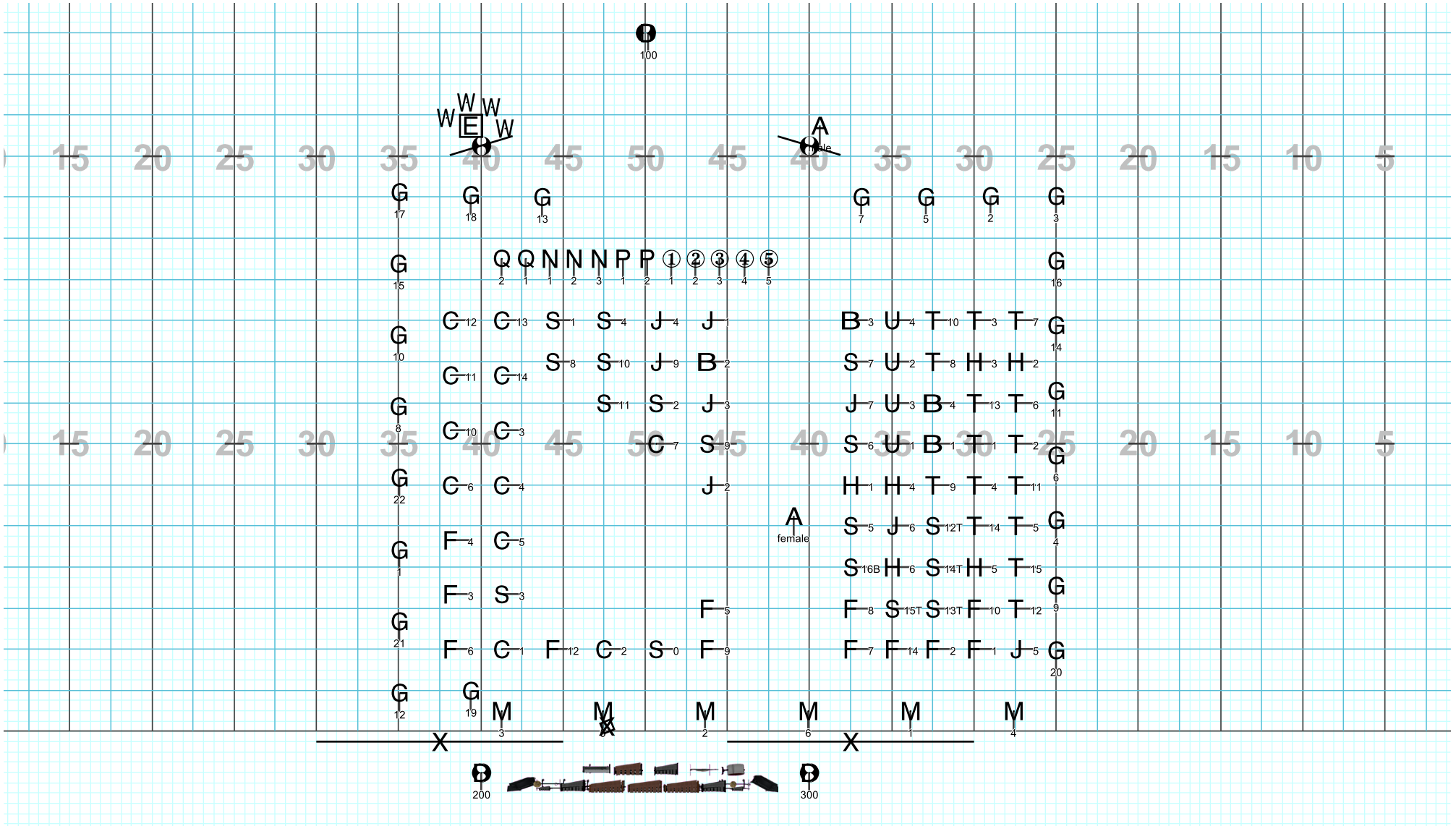


Set #20 Measures: 75-76 Counts: 10

Band expands to prison bars tpo
 trap good spy

Director Viewpoint

HartCo Mvt 2 2017



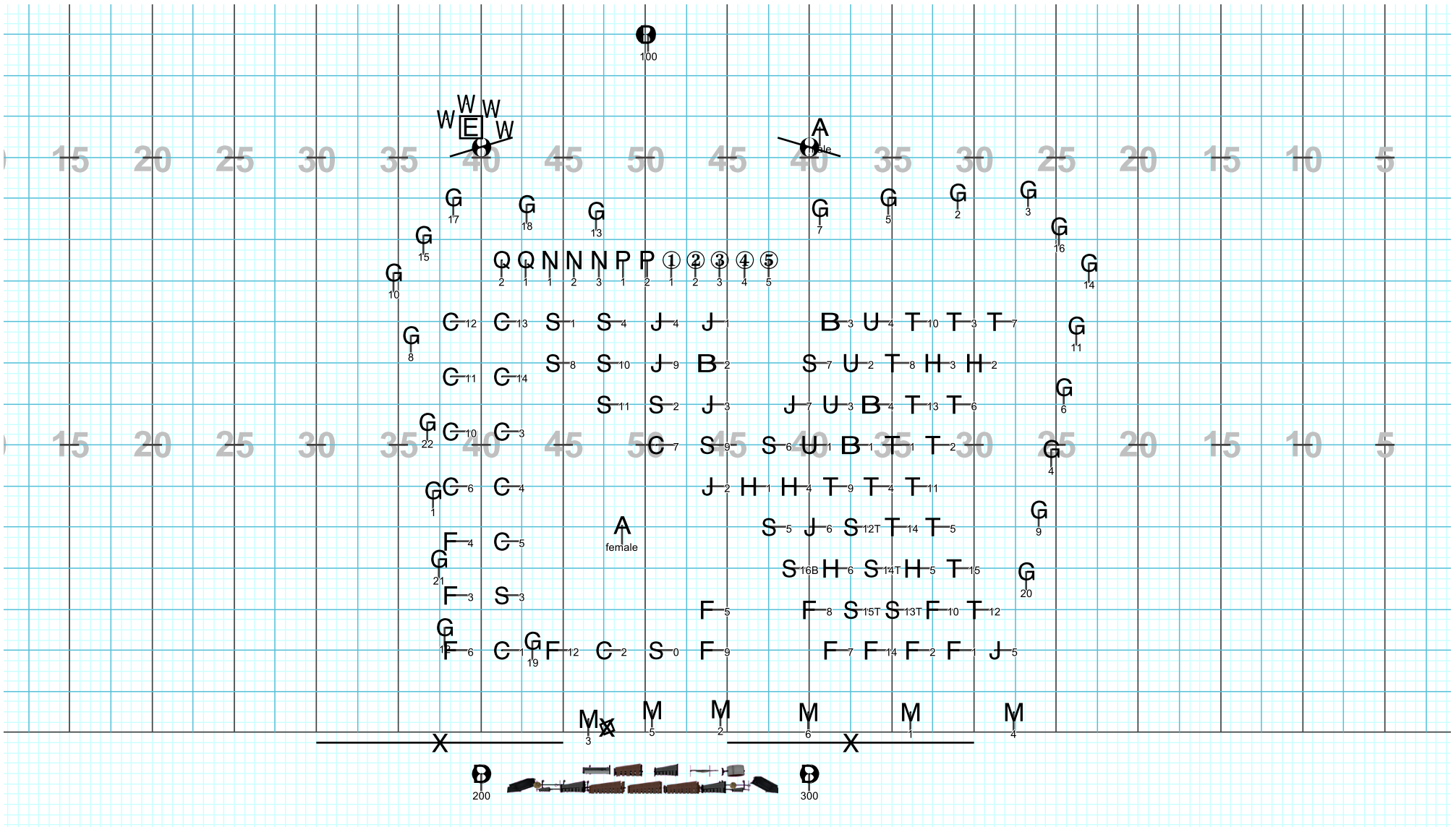
Set #21 Measures: 77-78 Counts: 10

Spy tries to escape by Brass

Brass on side B move out

WW body vis on hold

HartCo Mvt 2 2017

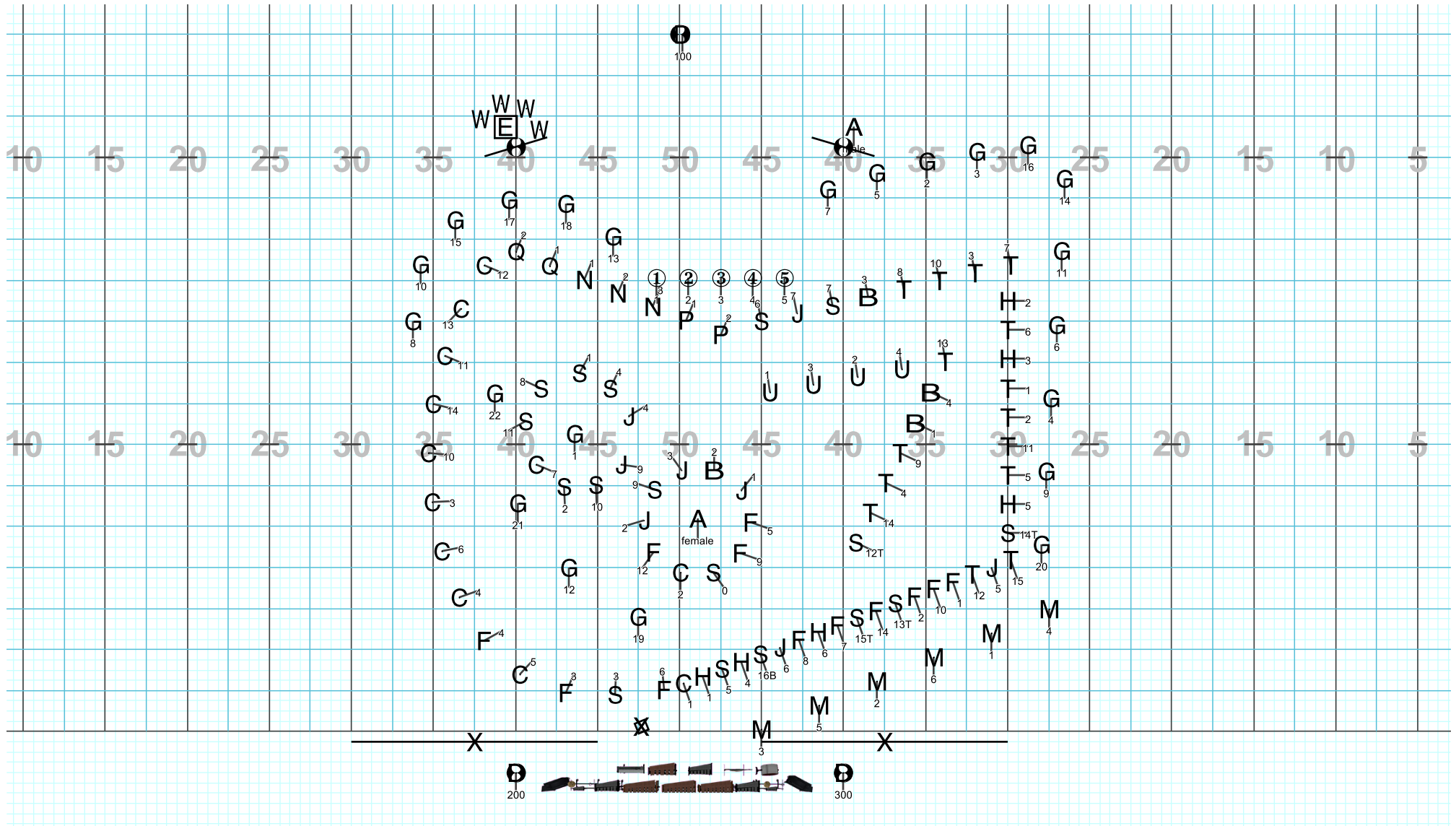


Director Viewpoint

Set #22 Measures: 79-80 Counts: 10

Spy runs back from Brass push back Brass step-2 to chevron the box

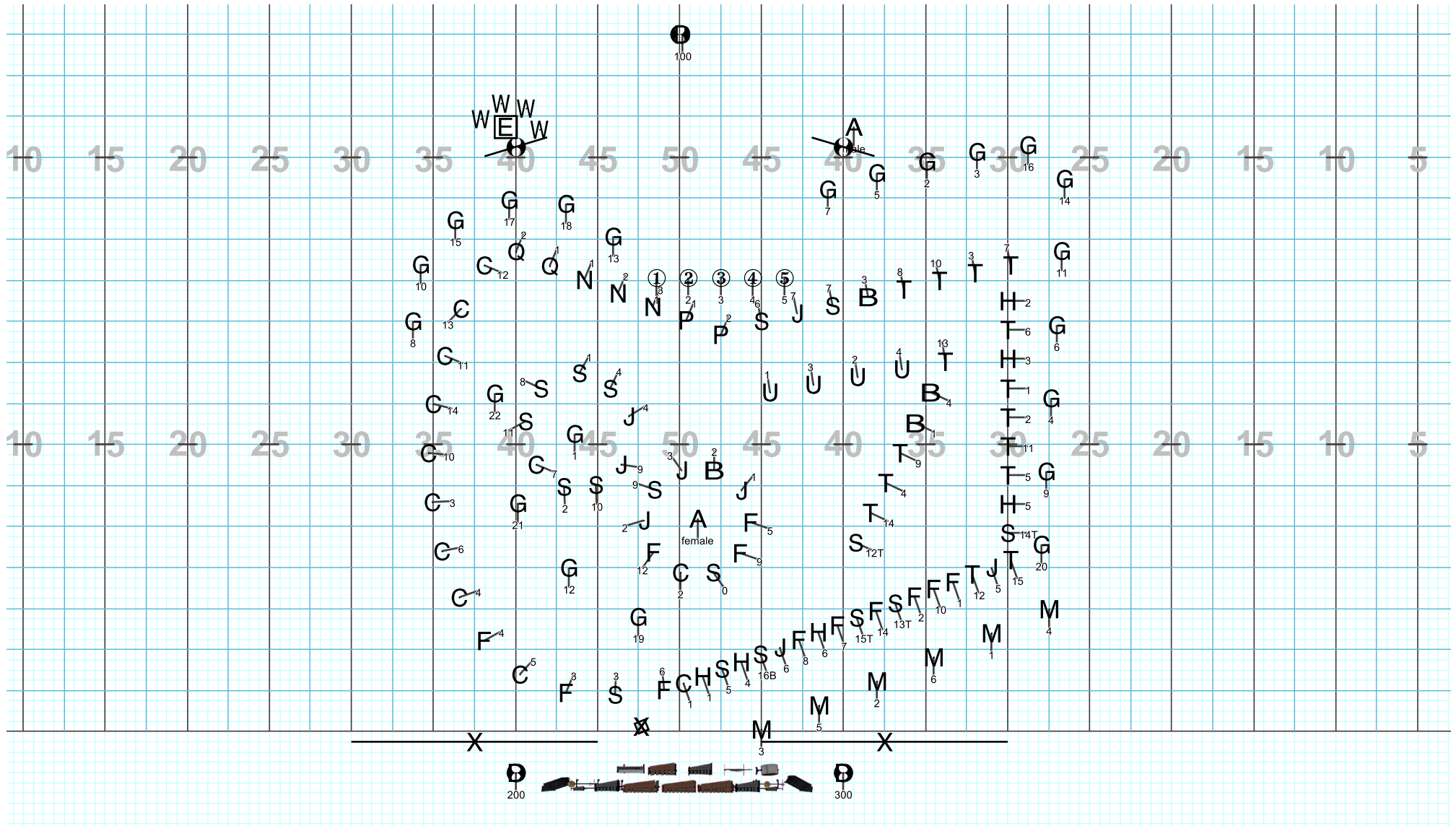
Far Side A WW quick rotate and return Mid WW body visual



Director Viewpoint

Set #25 Measures: 87-88 Counts: 8

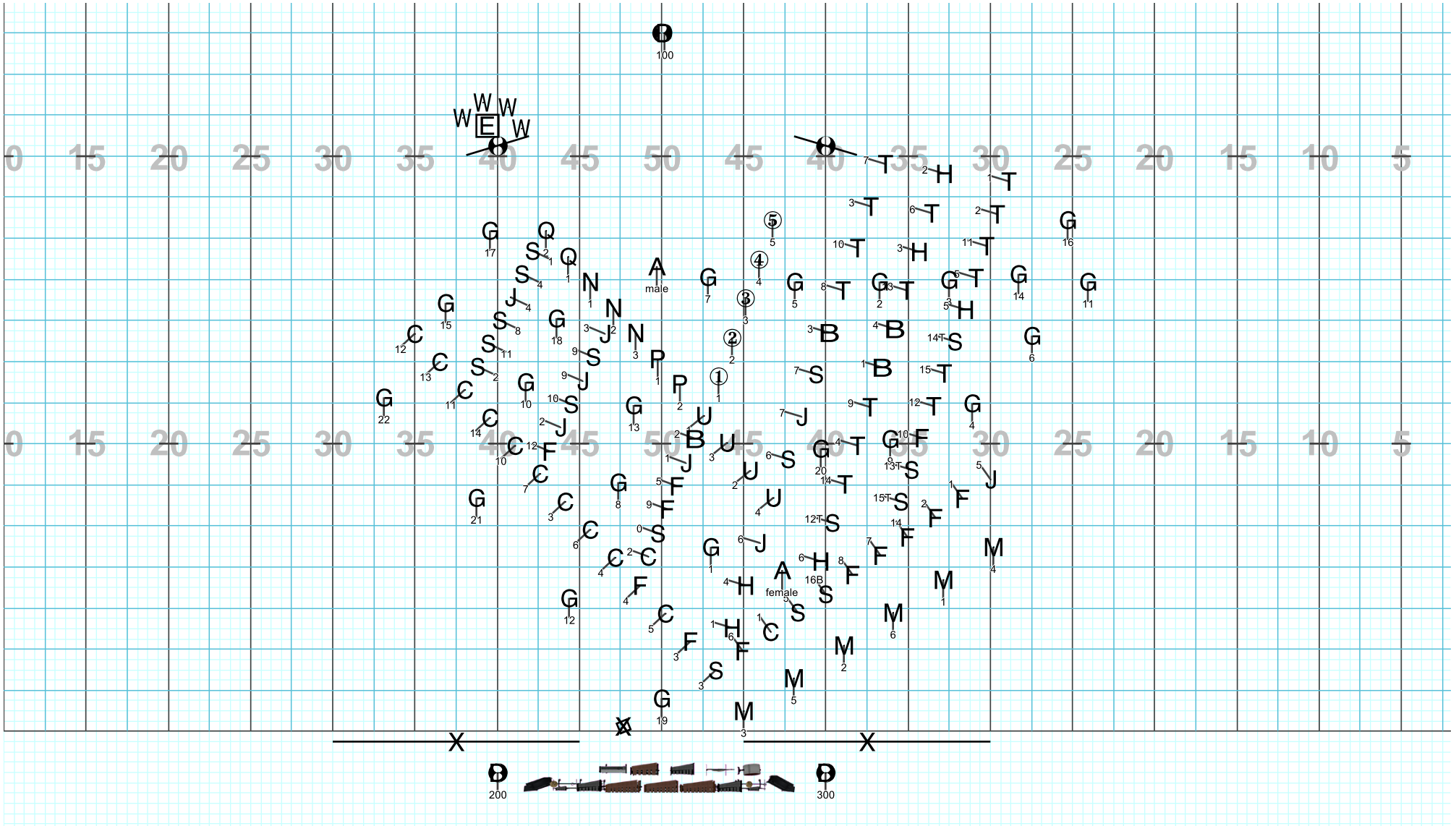
Step out vis for 00 followed by all
step out on next down beat



Director Viewpoint

Set #26 Measures: 89-91 Counts: 12

"All step out, Good Spy shows case triumphantly"



Set #27A Measures: 94-97 Counts: 16

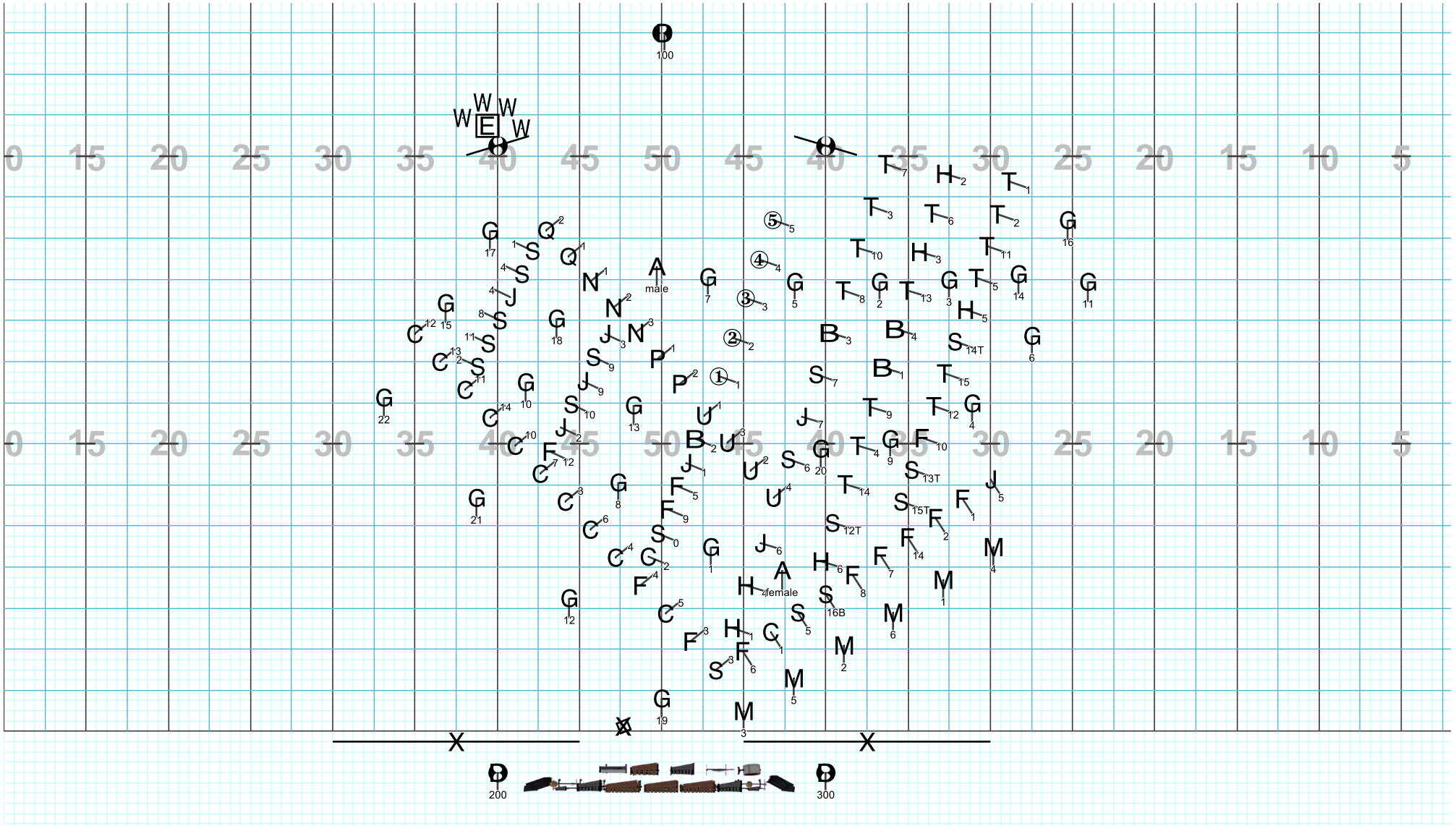
"Good spy moves forward, removes coat and reveals double agent status, bad spy enters from the

Float to final form

Director Viewpoint

HartCo Mvt 2 2017

Licensed to: Pickens County High School Band
Created on Pyware 3D.
Printed: Mon, Jul 24, 2017 at 4:39 PM

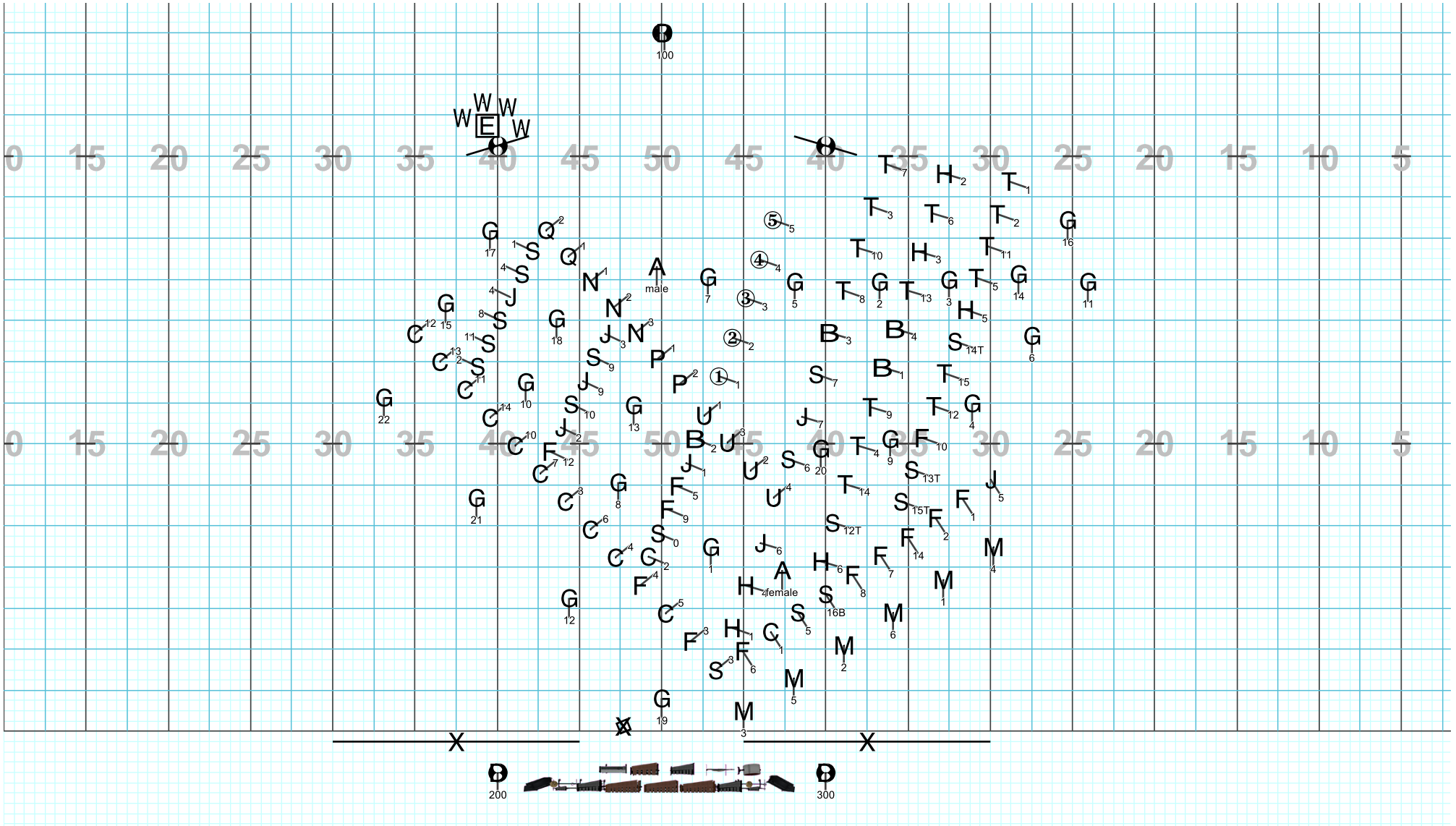


Set #28 Measures: 98-99 Counts: 8

Hold and body vis (point to double agent)

HartCo Mvt 2 2017

Licensed to: Pickens County High School Band
Created on Pyware 3D.
Printed: Mon, Jul 24, 2017 at 4:39 PM



Set #29 Measures: 100-101 Counts: 8

Big Hit Body vis and down

Director Viewpoint